



MAR
AZUL

Sayulita

I FOLLOWED MY HEART,
AND IT LED ME TO THE BEACH.

... 26 oceanfront



EXCLUSIVE RESIDENCES

Seguí mi corazón, y me llevó a la playa.





THE “CROWN JEWEL”
OF THE RIVIERA NAYARIT –

Sayulita is an exciting Seaside town with picturesque beaches, a surfers’ paradise, art galleries, boho boutiques, charming restaurants and great food.

Sayulita has been named a *pueblo magico* by the government of Mexico, a designation reserved exclusively for the most enchanting towns throughout Mexico that provide visitors with a “magical experience”, due to their culture, history, or natural beauty.

Live your dream.



STANDARD FEATURES

02 PENTHOUSES
3 BEDROOM • 2.5 BATH

02 GRAND VILLAS with POOL
2 BEDROOM • 2.5 BATH

16 VILLAS with POOL tipo A
2 BEDROOM • 2.5 BATH

03 VILLAS tipe B
1 BEDROOM • 1 BATH

08 VILLAS tipe C and D
2 BEDROOM • 2 BATH

- Dual Ingress/Egress from Ocean Road and Upper Level with Enclosed Vehicle and Golf Cart Parking
- Rooftop Infinity Edge Pool with Bar Stools
- Rooftop Fitness Centre with Treadmills, Bikes, Weight Machines, and Yoga Area
- Rooftop Resident Lounging Area with Bar, Chaises and Furniture
- Elevator
- Beautiful Wood Interior Finishes
- High Quality Cabinetry
- Top of the Line Appliance Package
- Washer/Dryers Included
- Attractive Lighting Fixtures
- Completely Air-Conditioned
- Designer Furniture Packages Available

*PRICING OF THESE ITEMS AVAILABLE
FOR STANDARD UNITS UPON REQUEST









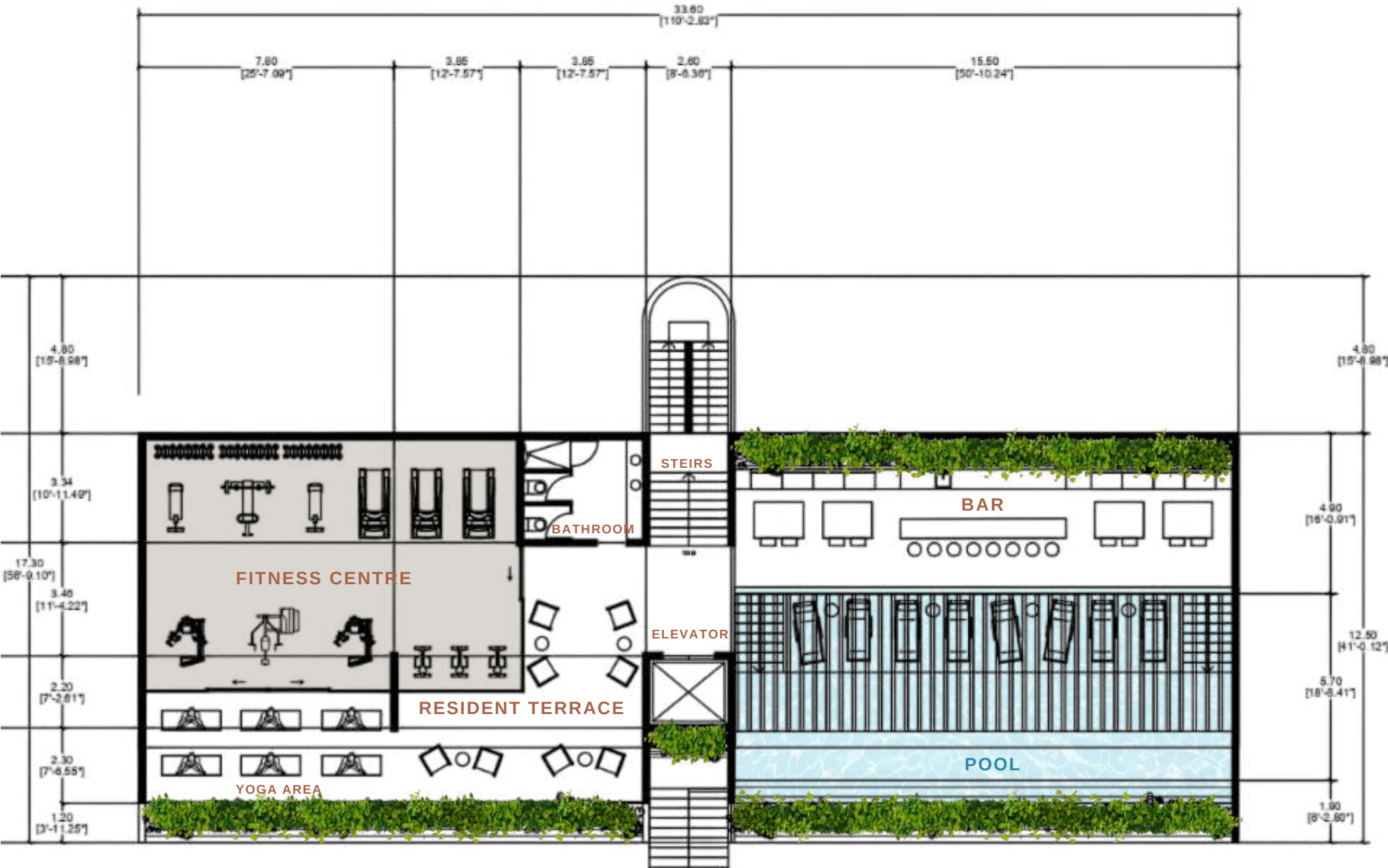




ESPACIO LIZAV
ഒപ്പമി

CARLIZIL
കാരിസില

AMENITY LEVEL 10



GRAND VILLA with PRIVATE POOL

• 2 BEDROOM • 2.5 BATH



LEVEL

2

UNITS
1-2

LIVING AREA: **137.28** m2

TERRACE: - m2

TOTAL LIVING AREA: - m2 **2401.21** sqf

GRAND VILLA with PRIVATE POOL • 2 BEDROOM • 2.5 BATH



LEVEL

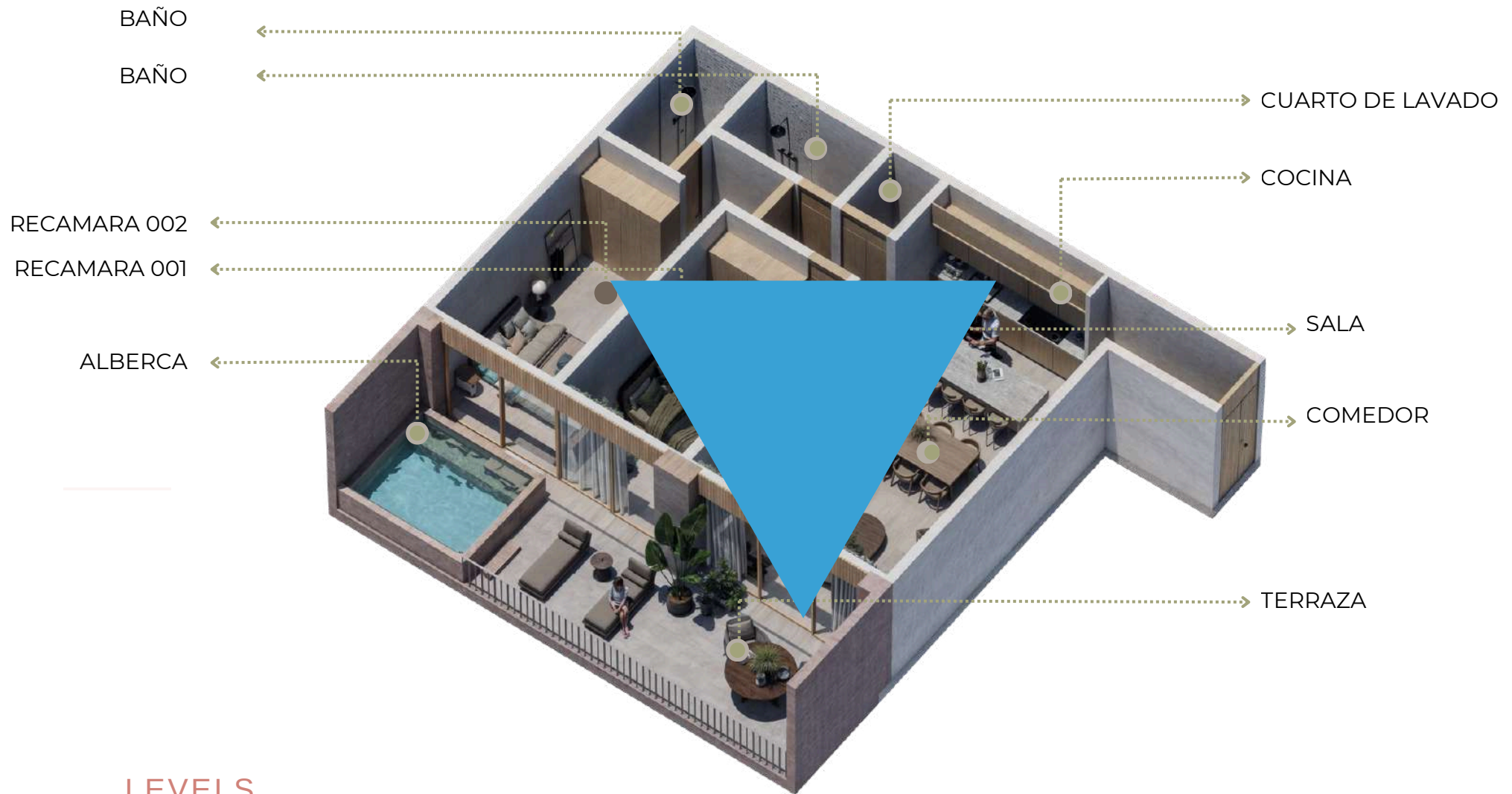
2

UNITS
2

LIVING AREA: **137.28** m2

TERRACE: **85.80** m2

TOTAL LIVING AREA: **223.08** m2 **2401.21** sqf



LEVELS
3-6

UNITS
08

LIVING AREA: **100** m2

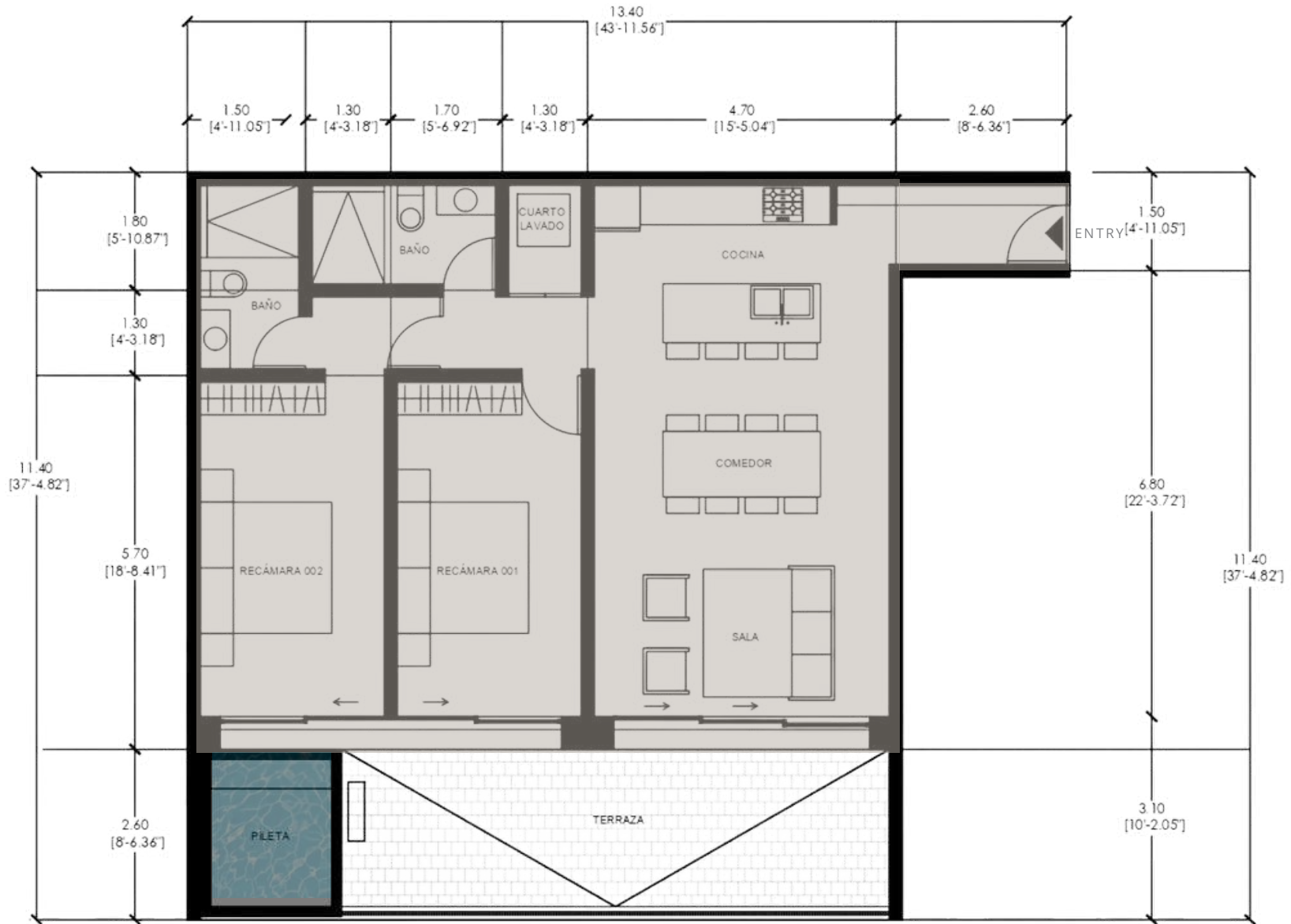
TERRACE: **28.34** m2

TOTAL LIVING AREA: **128.34** m2 **1381.41** sqf

VILLA with PRIVATE POOL

tipo **A**

• 2 BEDROOM • 2 BATH



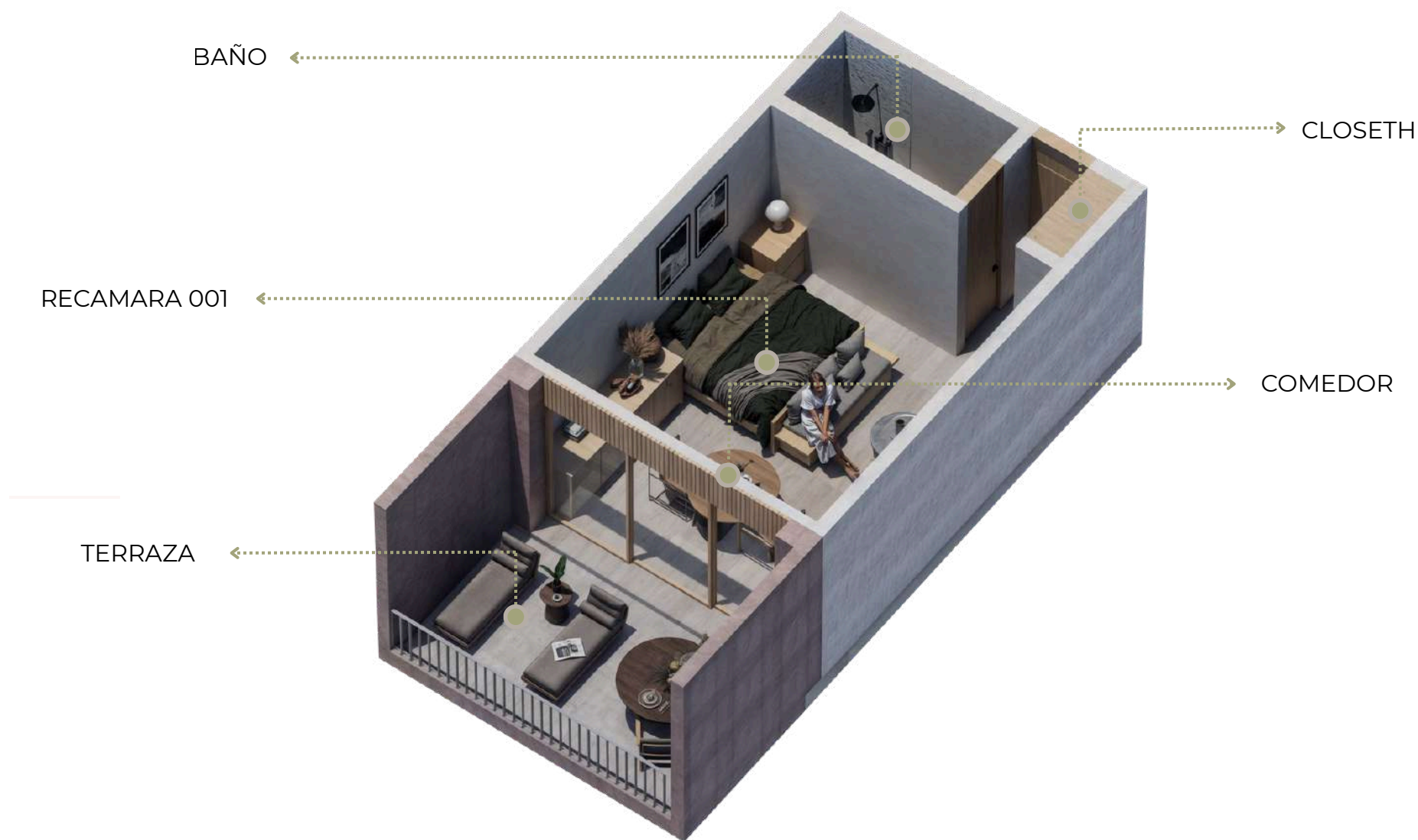
LEVELS
3-6

UNITS
3-10

LIVING AREA: **100 m2**

TERRACE: **28.34 m2**

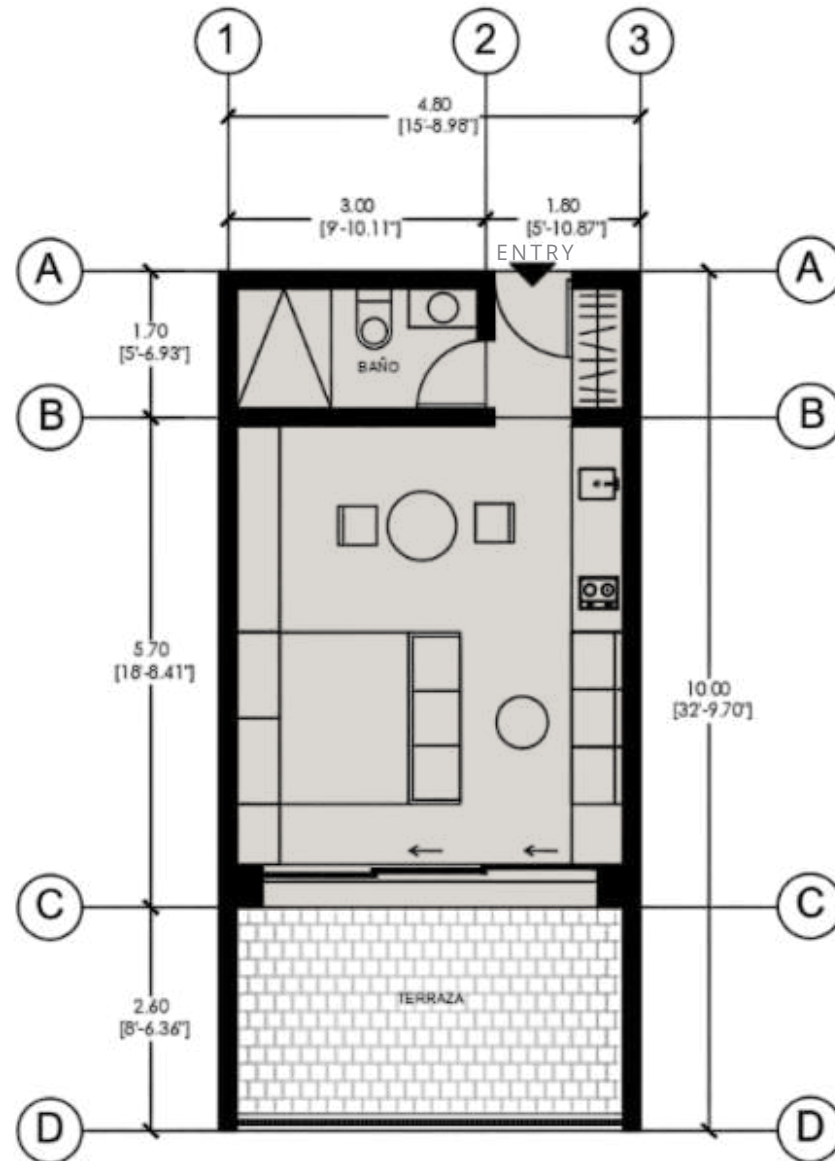
TOTAL LIVING AREA: **128.34 m2 1381.41 sqf**



LEVELS
3-6

UNITS
08

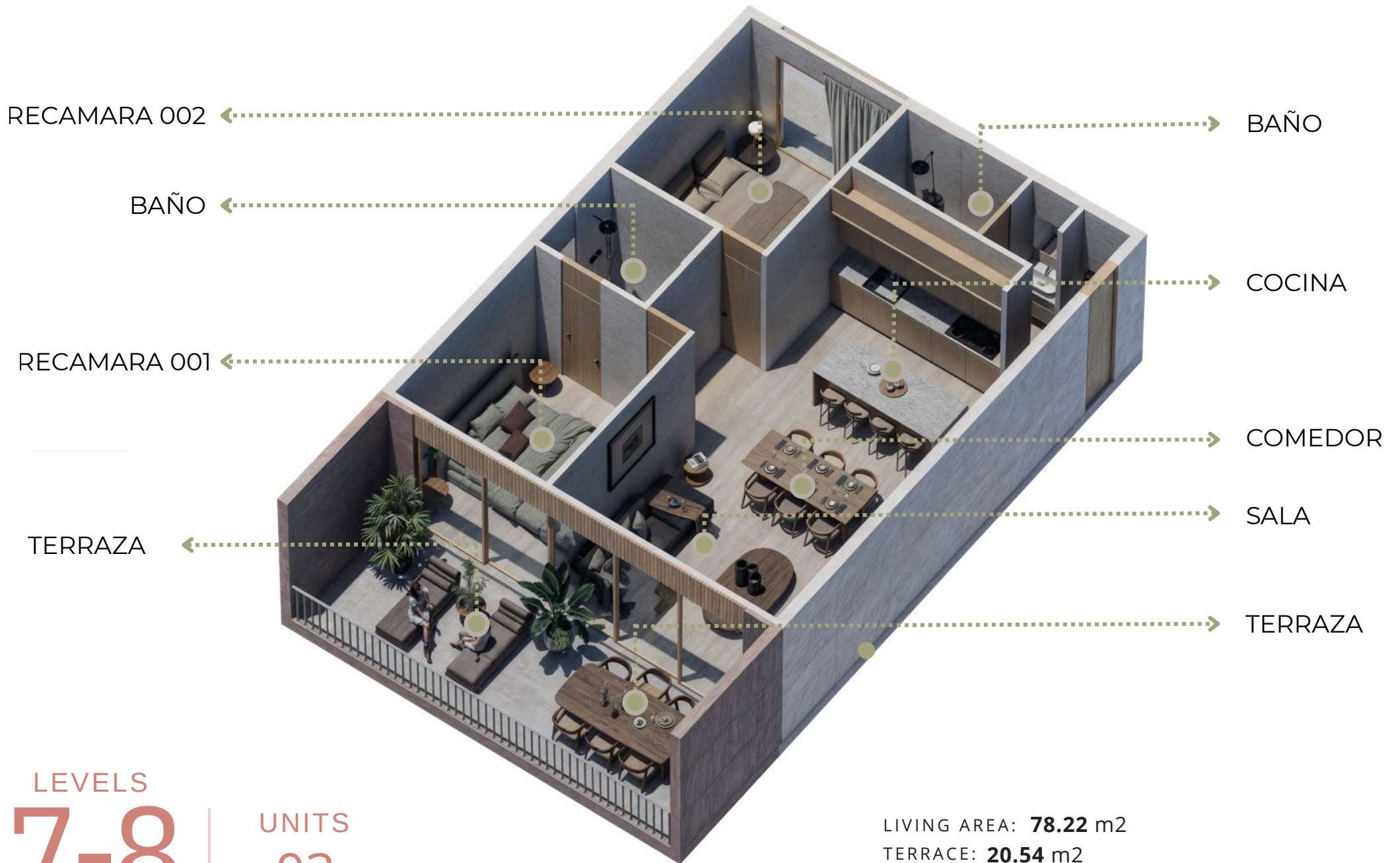
LIVING AREA: **36.26** m²
TERRACE: **12.74** m²
TOTAL LIVING AREA: **49** m² **527.43** sqf



LEVELS
3-6

UNITS
08

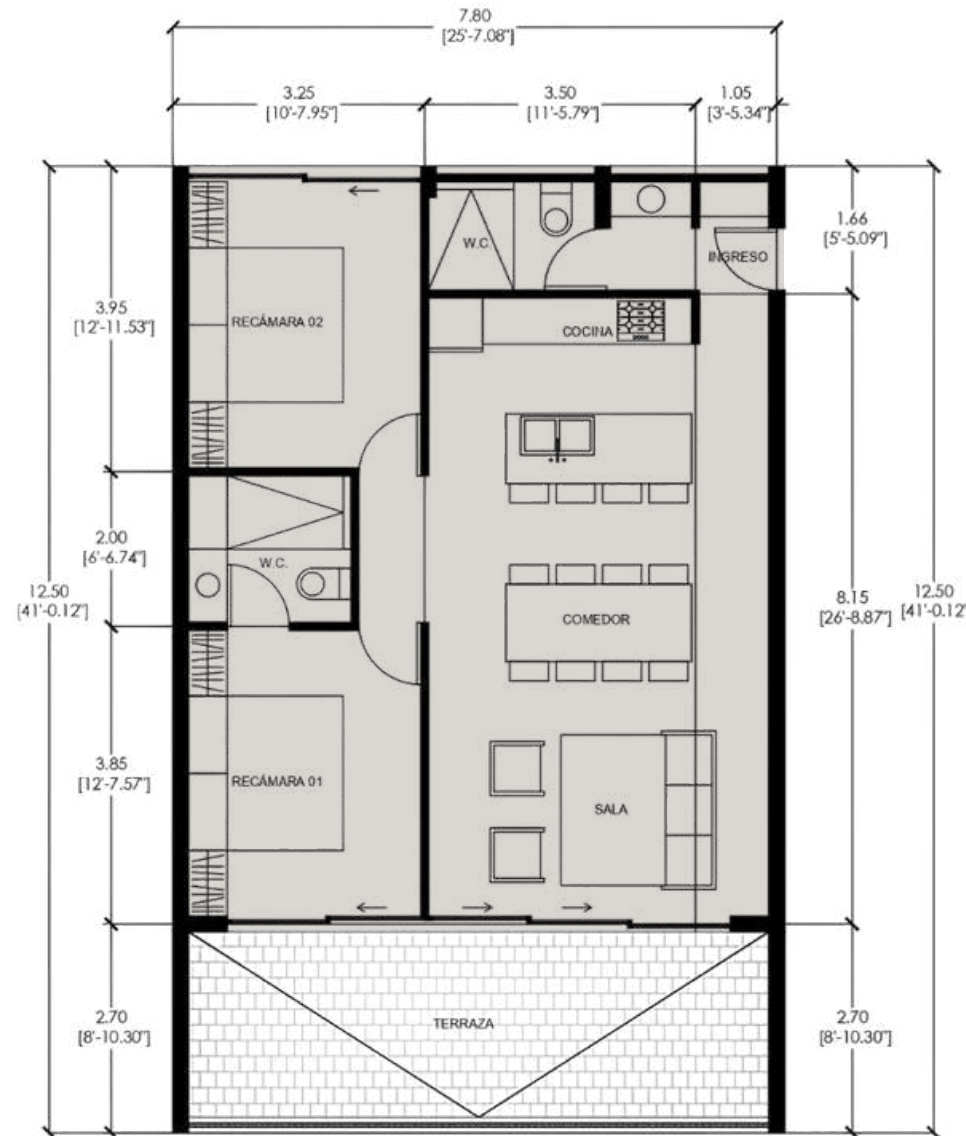
LIVING AREA: **36.26** m²
 TERRACE: **12.74** m²
 TOTAL LIVING AREA: **49** m² **527.43** sqf



LEVELS
7-8

UNITS
03

LIVING AREA: **78.22** m2
TERRACE: **20.54** m2
TOTAL LIVING AREA: **98.76** m2 **1063.04** sqf



LEVELS
7-8

UNITS
03

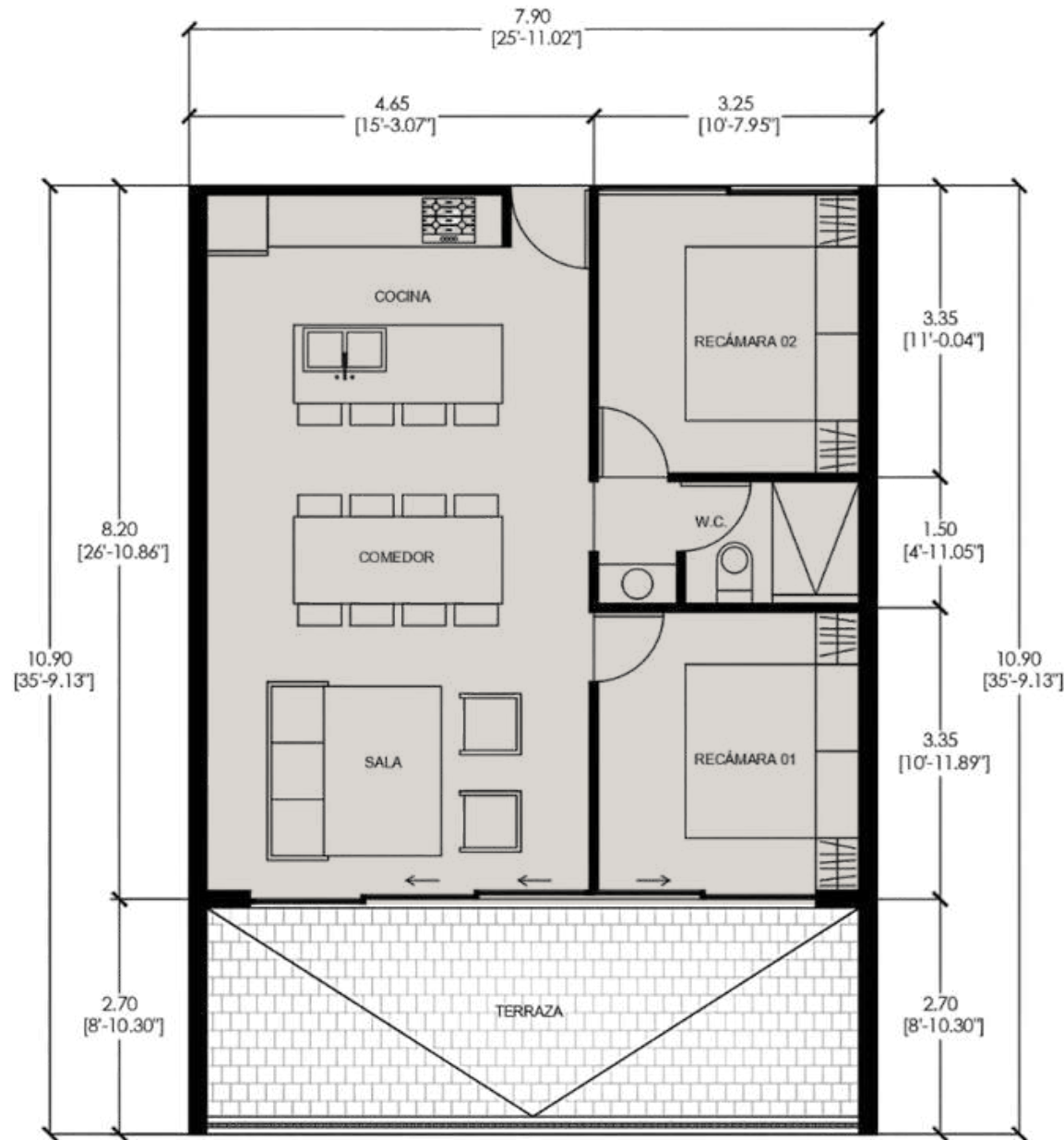
LIVING AREA: **78.22** m2
 TERRACE: **20.54** m2
 TOTAL LIVING AREA: **98.76** m2 **1063.04** sqf



LEVELS
7-8

UNITS
03

LIVING AREA: **65.68** m2
TERRACE: **20.54** m2
TOTAL LIVING AREA: **86.22** m2 **928.05** sqf



LEVELS
7-8

UNITS
03

LIVING AREA: **65.68** m²

TERRACE: **20.54** m²

TOTAL LIVING AREA: **86.22** m² **928.05** sqf

Pent House

• 3 BEDROOM • 2.5 BATH



LEVELS
09

UNITS
02

LIVING AREA: **154.44** m2
TERRACE: **40.56** m2
TOTAL LIVING AREA: **195** m2 **2098.96** sqf

Pent House

• 3 BEDROOM • 2.5 BATH



LEVELS
09

UNITS
02

LIVING AREA: **65.68** m²

TERRACE: **20.54** m²

TOTAL LIVING AREA: **86.22** m² **928.05** sqf

A tropical beach scene with palm trees, buildings, and a boat. The background shows a rocky coastline with several buildings, including one with a prominent conical roof. The foreground features a blue boat and some green and red foliage. The sky is blue with some clouds.

MAR
AZUL

Sayulita

